

NEWSLETTER

“WHAIA TE ITI KAHRANGI”
to be the best that I can be

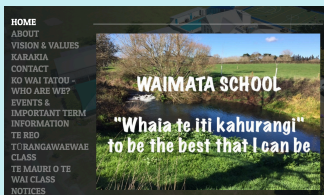


Student Management System:



Website:

www.waimata.school.nz



Contact Number:

027 755 7690



HE KŌRERO TĀ MR PHILLIPS *(A message from Mr Phillips)*

Kia ora e te whanau,

Its awesome to be back at kura, catching up with all the tauira on the adventures that they had over the summer holidays. A special welcome to our new tamariki and their whanau, its always a pleasure to expand our kura iwi with whanau from various parts of the motu, as well as those returning to Aotearoa from lands afar.

Nau mai, Haere Mai:



A warm welcome to Whaea Jodie Steiner who begins her teacher journey with us from the beginning of Term 2. Whaea Jodie is returning to Waihi where she attended Waihi College after a period of teaching in the United Kingdom. Whaea Jodie will be working in Turangawaewae Wednesday - Friday with Whaea Kookie as a job share with Whaea Char who will continue to work Mondays and Tuesdays. We wish her and her wee whanau a safe journey home.

Why Waimata Series:

Last year we started a “Why Waimata?” series of publications sent directly to whanau via email detailing the history of who we are as a school today. This week whanau will receive the third publication in the series that hopefully continues to provide clarity on the kaupapa we do here at kura.

Ka Ora, Ka Ako - School Lunches

Our new onsite team of Kirsty and Awhi have got off to an amazing start with our internal school lunches model this year. The kids are loving the new and wide variety of kai they are providing for our lunches and we are all stoked to have them on board with us! Keep the good kai coming!

Ka kite ano.

IMPORTANT DATES

FEBRUARY - PĒPUERE

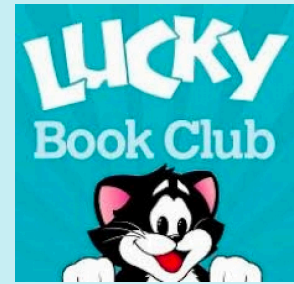
- 22 - Ripa Rugby in Katikati begins.
- 26 - Waikato Volleyball visits TMOTW.
- 26-27 - Life Education Trust Programme.

MARCH - POUTŪ TE RANGI

- 1 - Final Senior Camp payments due.
- 4 - Waikato Volleyball visits TMOTW.
- 5 - Alex Luken Hockey in school visit.
- 11-15 - Senior CAMP PŌNEKE.
- 12 - TWW Hockey Big Day Out.
- 29-2 - Easter Holidays. (Good Friday, Easter Monday & Tuesday)

APRIL- PAENGAWHĀWHĀ

- 2 - Easter Holidays
- 5 - TMOTW Volleyball Festival
- 13-28- Term 1 School Holidays



Lucky book club orders due into the office by

Friday 23rd of February

- Alternatively you can order online through Loop app or www.scholastic.co.nz/LOOP

CAMP FEES

Senior camp fees need to be paid in full by the 1st March. If you need to make arrangements please see Whaea Tracey at the office asap.



Student accounts are being sent home this week. You can also view your financial details via the HERO app.

TURANGAWAEWAE

our place to stand, our place in the world

It is now week 3 of Term 2 and we have been learning the routines and responsibilities of our classroom.

A big focus has been on looking after our belongings and making sure we put them in the correct place so that at the end of the day your tamariki have all their belongings to take home.



REMINDER:

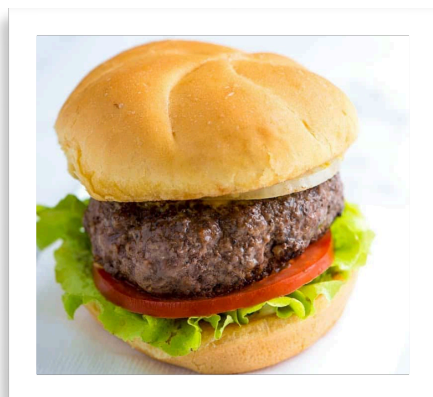


Please name all your child's belongings.

Leave toys and other personal items that do not need to be at school at home.

Lollies and chocolates are treats and need to be left and eaten at home.

LUNCH IN SCHOOLS:



The school now provides a delicious cooked lunch each day for your tamariki, it is still expected that you provide food and a bottle of water they can have before and after lunch.

It would be appreciated if you limit the amount of packaged foods and drinks that have a high sugar content, such as the little jellies, fruit juice, roll ups, strings etc. They provide little nutritional value and it also means less packaged rubbish that is sent to the landfill and what we see around our kura.



TE MAURI O TE WAI

the deep connection between water, the environment and us as people

Nau mai hoki mai whakatau mai:

Welcome back to all our tamariki and whānau. A warm welcome to our new ākonga Ryder & Jayden Hennerley-Williams and our new year 4 ākonga who moved and settled well into our akomanga this year.



Teaching Team 2024:

We welcome Whaea Lauren to the team this year. She brings with her another kete full of mātauranga. Our ākonga are so lucky to have many baskets of mātauranga at their hands.

Monday: Whaea Kate & Whaea Tui

Tuesday: Whaea Kate & Whaea Tui

Wednesday: Whaea Tui & Whaea Lauren

Thursday: Whaea Kate & Whaea Lauren

Friday: Whaea Kate & Whaea Lauren



Camp Pōneke:

Camp Pōneke is just around the corner and we are getting very excited. We have a camp hui today “WEDNESDAY 21st FEBRUARY” at 3pm in Te Mauri o te Wai. We will share more in-depth information about our haerenga today and be readily available to answer any questions.

TE MAURI O TE WAI

the deep connection between water, the environment and us as people



Māra kai

Our year 4's, supported by our now year 6's began a new garden last year and planted it up prior to the holidays. It was exciting to return to school and see what was ready.

We have harvested potatoes, carrots, beetroot, lettuce, cucumbers and tomatoes! We're waiting for our corn and pumpkins.

Some of our crew made soup with some of the vegetables while the rest made plans to replant.

The aim for the garden this year is to plant seasonally, explore planting ki te maramataka, plant for coming events, plant for our whare kai and daily lunches, try new things and share with our community.

If you would like to share your knowledge, learn alongside tauira or support this kaupapa we would love to have you on board, there is always something to do! Please get in touch, even half an hour here and there would be really helpful.

Daily Reminders

Please make sure your child/s belongings *are named*.

We swim daily this term - please bring togs everyday or a note to explain.

Hats are to be worn at play, sport and mahi time, please make sure your child has a hat, these can be left at school to make sure they can take part safely in all activities.



Getting out and about

Exploring our local spaces has been a big part of the start of this year. The intention behind these haerenga is to prepare tauira to assess and mitigate risks, they will be writing their own risk assessment for camp! These times also help to build whanaunatanga as we learn about each other's skills, talents and passions, including our kaiako. Our special place, Te Ngāhere at the Smeaton's farm will be our second classroom as we become kaitiaki. We are looking forward to sharing this learning with you.

TE REO MĀORI GLOSSARY

A glossary to help us grow our word bank and knowledge of Māori words used within our newsletters.

<i>Mihi</i>	- a greeting
<i>Ngā mihi</i>	- thank you!
<i>Whānau</i>	- family
<i>Tumuaki</i>	- Principal
<i>Kura</i>	- school, education, learning gathering
<i>Tauira</i>	- student or pupil
<i>Tamariki</i>	- children
<i>Iwi</i>	- tribe
<i>Mātauranga</i>	- knowledge
<i>Hui</i>	- meeting
<i>Ākonga</i>	- students